



Please paste the barcoded label here

TOTAL MARKS

--

NATIONAL SENIOR CERTIFICATE EXAMINATION
MAY 2025

COMPUTER APPLICATIONS TECHNOLOGY: PAPER II

EXAMINATION NUMBER

--	--	--	--	--	--	--	--	--	--	--	--	--	--	--

Time: 3 hours

150 marks

PLEASE READ THE FOLLOWING INSTRUCTIONS CAREFULLY

1. This question paper consists of 37 pages. Please check that your question paper is complete.
2. The paper is divided into Section A (25 marks), Section B (75 marks) and Section C (50 marks).
3. **Answer ALL the questions on the question paper and hand it in at the end of the examination. Remember to write your examination number in the space provided on the question paper.**
4. Non-programmable calculators may be used.
5. It is in your own interest to write legibly and to present your work neatly.
6. Read the questions carefully. Take note of the verbs of the questions, such as explain, name, select, discuss, and identify; and answer accordingly.
7. Give your answers in general terms e.g., use 'word processor' rather than 'Microsoft Word' or 'WordPerfect'. Use brand names only when asked.
8. In general, a mark is allocated per fact. Therefore, a two-mark question would require two facts, and so on. One-word answers will not necessarily give you the mark. Write in full sentences.
9. **DO NOT USE CORRECTION FLUID.**
10. One additional page (page 37) is included at the end of the paper. If you run out of space for an answer, use this page. Clearly indicate the number of your question you are answering should you use this additional space.

FOR OFFICIAL USE ONLY:

MARKER TO ENTER MARKS BELOW

Q1	Q2	Q3	Q4	Q5	Q6	Q7	Q8	Q9	TOTAL
15	10	20	17	11	15	12	22	28	/150
MARKER/MODERATOR TO INITIAL BELOW									



SECTION A

QUESTION 1

1.1 Select the **MOST** appropriate answer to each question. Write the letter of your choice next to each question number in the space provided.

1.1.1 is the highest storage capacity measurement for storage media.

- A Exabyte
- B Petabyte
- C Gigabyte
- D Terabyte

1.1.1	
-------	--

(1)

1.1.2 Identify the screen-based input interface that enables users to input data by selecting on-screen keys with a pointing device or touch input.

- A Dvorak keyboard
- B Braille keyboard
- C Large keys keyboard
- D Virtual keyboard

1.1.2	
-------	--

(1)

1.1.3 A formatting feature used to make the first character of a paragraph larger and across one or several lines of text.

- A Subscript
- B Drop cap
- C All caps
- D Superscript

1.1.3	
-------	--

(1)

1.1.4 Unwelcome electronic communication that contains irrelevant content, advertisements, and potential fake news.

- A Hoax mail
- B Hate mail
- C Spam mail
- D Junk mail

1.1.4	
-------	--

(1)

1.1.5 Identify the error indicator in a spreadsheet cell that will display when a formula is referring to an invalid cell.

- A #VALUE!
- B #DIV/0!
- C #REF!
- D #####

1.1.5	
-------	--

(1)

1.1.6 Identify the document formatting program that is best suited for creating lengthy academic papers.

- A Microsoft Word
- B Microsoft Outlook
- C Microsoft Teams
- D Microsoft Access

1.1.6	
-------	--

(1)

1.1.7 Which of the following statements are crucial guidelines for users to guarantee secure online banking?

- (i) Use the option to be anonymous when browsing.
 - (ii) Always log out of the website when you're done.
 - (iii) Use *only* public Wi-Fi to make online payments.
 - (iv) Ensure your password is both complex and secure.
- A (i) and (ii)
 - B (i), (iii) and (iv)
 - C (ii), (iii) and (iv)
 - D (i), (ii) and (iv)

1.1.7	
-------	--

(1)

1.1.8 Name the device a person who is paralysed in both arms and both legs would use to control a computer.

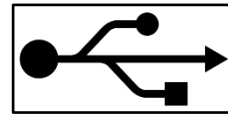
- A Trackball
- B Puff-suck switch
- C Foot Mouse
- D Finger switch

1.1.8	
-------	--

(1)

1.1.9 With what is the icon shown here associated?

- A DVI
- B USB
- C HDMI
- D VGA



<www.vectorstock.com>

1.1.9	
-------	--

(1)

1.1.10 What components are typically associated with a thin client?

- A Keyboard, mouse, projector, speakers, and restricted memory.
- B Monitor, keyboard, mouse, computer tower, CPU power, and hard disk.
- C Monitor, keyboard, mouse, restricted memory, and CPU power.
- D Monitor, keyboard, mouse, virtual memory, and dual hard disks.

1.1.10	
--------	--

(1)

1.2 Choose the correct term/concept in Column B that **BEST** match(es) the definition in Column A. Write the letter of your choice next to each question number in the space provided, for example 1.2.1 O.

	Column A	Column B
1.2.1	An auto focus camera designed for simple operations.	A. Heading
1.2.2	An area that appears at the top of every page in a document that can contain one or more lines, text or graphics.	B. Validation rule
1.2.3	Ensuring that data captured into a database conforms to the appropriate criteria.	C. Phishing
1.2.4	A computer connected to the Internet that has been compromised and can be remotely manipulated to carry out malicious activities.	D. Compact
1.2.5	A synonym for 3D printer ink.	E. Default
		F. Header
		G. Trojan
		H. Text wrap
		I. Layering
		J. Validation text
		K. Filament
		L. Zombie
		M. Digital Single Lens Reflex
		N. Electronic Funds Transfer

WRITE YOUR ANSWER HERE:

1.2.1	
1.2.2	
1.2.3	
1.2.4	
1.2.5	

(1)

(1)

(1)

(1)

(1)

[15]

MARKER'S USE ONLY:	Total mark Q1	
--------------------	------------------	--

QUESTION 2

2.1 Choose the **MOST** appropriate term/function (underlined and given in brackets) for each statement that follows. Write **ONLY** the term/function of your choice next to each statement number in the space provided.

2.1.1 (GIF/JPG) is a file format that supports images that are both still and animated.

2.1.1	
-------	--

(1)

2.1.2 (Intranet/Ethernet) is a private network contained within an organisation or enterprise that is used to securely share company information and resources among employees.

2.1.2	
-------	--

(1)

2.1.3 Preparing a disk to store data is called (disk clean-up/format).

2.1.3	
-------	--

(1)

2.1.4 Medical centres, factories and airports prefer to use (UTP/STP) cables due to their ability to transfer data better in environments with large amounts of interference.

2.1.4	
-------	--

(1)

2.1.5 The operator, (≠ / <>) is used in a function to exclude specific data.

2.1.5	
-------	--

(1)

MARKERS' USE ONLY

2.2 Expand the following abbreviations.

2.2.1 OSS

_____ (1)

2.2.2 DDR

_____ (1)

2.2.3 GPS

_____ (1)

2.2.4 Mbps

_____ (1)

2.2.5 AR

_____ (1)
[10]

MARKER'S USE ONLY:	Total mark Q2	
--------------------	------------------	--

25 marks

SECTION B

QUESTION 3 SYSTEM TECHNOLOGIES

3.1 In the space provided below, identify the following images.

3.1.1



[<<https://www.paycheap.co.za/.html>>]

Name of hardware		(1)
-------------------------	--	-----

3.1.2



[<https://www.bhphotovideo.com/c/product/1016646-REG/asus_r9270x_dc2t_2gd5_radeon_r9_270x_.html>]

Name of hardware		(1)
-------------------------	--	-----

3.1.3



[<<https://usa.yamaha.com/products/yh-g01/index.html>>]

Name of hardware	(1)
-------------------------	-----

3.1.4

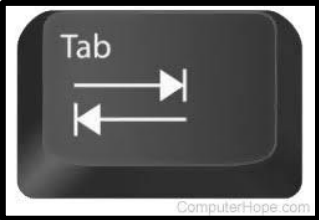


[<<https://fileviewerplus.com/open/>>]

Type of file	(1)
---------------------	-----


3.2 Fill in the tables below by stating the **main function(s)** of what is represented in the following images.

3.2.1

	<hr/> <hr/> <hr/> <hr/> <hr/> <p style="text-align: right;">(1)</p>
---	---


[<<https://www.computerhope.com/jargon/t/tab-key.htm>>]

3.2.2

	<hr/> <hr/> <hr/> <hr/> <hr/> <p style="text-align: right;">(1)</p>
--	---


[<<https://www.logo.wine/logo/>>]

3.2.3

	<hr/> <hr/> <hr/> <hr/> <hr/> <p style="text-align: right;">(1)</p>
---	---

[<<https://www.andyrathbone.com/2011/04/18/>>]

3.2.4

	<hr/> <hr/> <hr/> <hr/>
<p>[<">https://www.elevenforum.com/t.>]</p>	<p>(1)</p>

3.3 Give **TWO** examples of formats that may change when you change the regional setting of your operating system.

Example 1:

(1)

Example 2:

(1)

3.4 Refer to **Figure 1** below and answer the questions that follow.



Figure 1

[<<https://www.techpowerup.com/161073/>>]

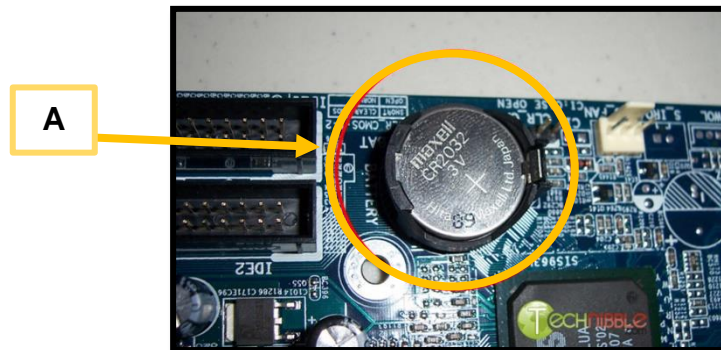
3.4.1 Identify the hardware component.

_____ (1)

3.4.2 How many RAM slots does this specific hardware component have?

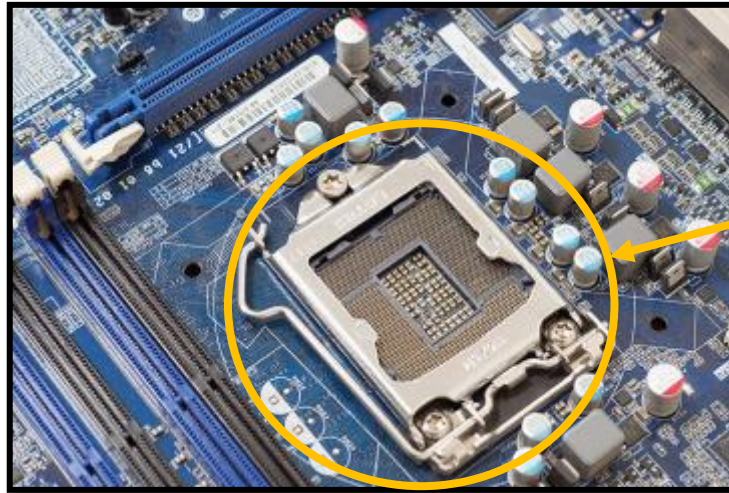
_____ (1)

3.4.3 The images below are extracts of components found on a motherboard. Identify the components labelled A and B (abbreviations are acceptable).



[<<https://turbofuture.com/computers/the-motherboard-components>>]

Label A: _____ (1)



[<<https://www.pearsonitcertification.com/articles/article.aspx?p=2731934&seqNum=13>>]

Label B: _____ (1)

3.5 A computer possesses two distinct types of memory, namely RAM and ROM. Elaborate on the purpose of each memory component without repeating information in both explanations.

RAM: _____

ROM: _____

(2)

3.6 Motivate why you would install a Graphic Processing Unit.

(1)

MARKERS' USE ONLY

3.7 A desktop computer cannot operate without a Power Supply Unit. Explain the role of the Power Supply Unit to validate this statement.

(2)

3.8 Give **ONE** way in which a user can free some space on a hard drive, except for transferring files or software to external devices.

(1)
[20]

MARKER'S USE ONLY:	Total mark Q3	
--------------------	------------------	--

QUESTION 4 INTERNET AND NETWORK TECHNOLOGIES

4.1 There are many network topologies for different organisations.

4.1.1 The image given below labelled as **Figure 2** is known as a star topology. Define the term *Network Topology*.

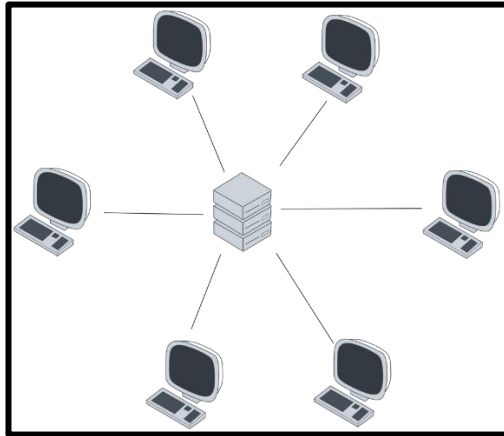


Figure 2

[<<https://www.wevolver.com/article/a-comprehensive-guide-to-understanding/>>]

(1)

4.1.2 Give **ONE** advantage and **ONE** disadvantage of a star topology.

Advantage:

Disadvantage:

(2)

4.2 When connecting to the Internet you have the option to select either copper or fibre cable connections.

4.2.1 Give **ONE** reason why you should not consider a fibre connection.

(1)

4.2.2 Define the term *eavesdropping*.

(1)

4.3 Satellite can provide Internet connections in rural areas.

4.3.1 Name **TWO** devices users need to connect to enable satellite Internet.

(2)

4.3.2 'Satellite Internet connections experience significant latency.' Clarify this statement by defining the term *latency*.

(1)

4.4 Online users use techniques such as downloading and streaming to transmit files. Define the terms *downloading* and *streaming*.

Downloading:

(2)

Streaming:

(2)

4.5 When surfing the web, the browser keeps track of your online activities. How can these web addresses remain undetected?

(1)

4.6 Social media allow users to share ideas and information by creating communities for interested users. Name **TWO** social media apps, excluding X (previously Twitter) and Instagram.

(2)

4.7 List **TWO** features found in a 'smart' home.

Feature 1:

Feature 2:

(2)
[17]

MARKER'S USE ONLY:	Total mark Q4	
--------------------	------------------	--

QUESTION 5 INFORMATION MANAGEMENT

MARKERS' USE ONLY



Figure 3

[<<https://www.medtronic-diabetes.com/en-gb/insulin-pump-therapy/minimed-780g-system>>]

Michael and João have been best friends since primary school. Michael was recently diagnosed with diabetes after numerous tests indicated irregular glucose (insulin) levels. The specialist decided to subscribe the MiniMed™ 780G insulin pump with sensors and app to monitor his insulin levels.

5.1 Michael and João attended the grade 11 adventure camp organised by their school. Michael, who relies on his phone to communicate with the app monitoring his insulin levels through a sensor in his arm, forgot his device. This app alerts him when his insulin levels are too high or too low. Occupied in the camp's activities, Michael began to feel weak and on the verge of fainting. João promptly accompanied him to the camp's nurse for assistance.

5.1.1 The nurse asked João questions to correctly treat Michael.

Give **THREE** important questions that the nurse could ask to determine Michael's symptoms and reason for feeling weak.

Question 1:

(1)

Question 2:

(1)

Question 3:

(1)

5.1.2 Each parent had to complete an online camp form with important information. Identify **FOUR** essential fields on the camp form you would need in a medical emergency.

Field 1: _____

Field 2: _____

Field 3: _____

Field 4: _____

(4)

5.2

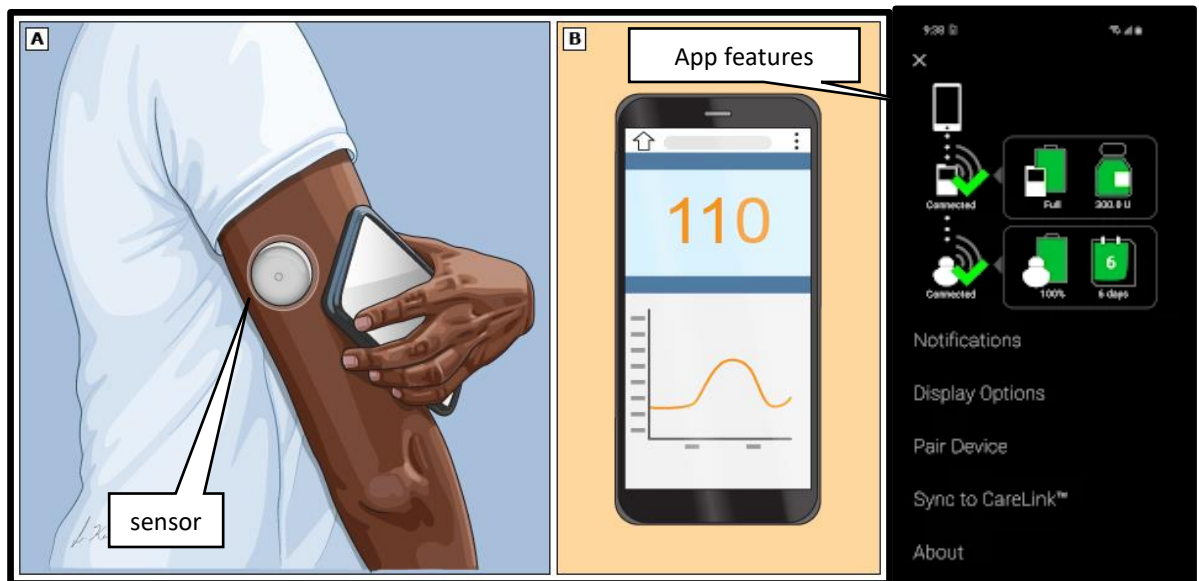


Figure 4

[<<https://www.uptodate.com/contents/glucose-monitoring-in-diabetes-beyond-the-basics/>>]
 [<<https://play.google.com/store/apps/details?id=com.medtronic.diabetes.minimedmobile.eu>>]

Michael's insulin levels are controlled and monitored by the sensor attached to his arm. 'The sensor converts small amounts of glucose from the interstitial fluid under the skin into an electronic signal' (Medtronic, 2023). The Minimed™ app allows him to view his insulin levels and other sensor features.

Using the headings presented below, indicate how The Minimed™ app will monitor Michaels' insulin levels.

Input:

(1)

Processing:

(1)

Output:

(1)

5.3 Refer to **Figure 5** below which appeared in the app that Michael uses. What advantage does this feature offer when Michael needs to maintain a record of the data received from the app?



Figure 5

(1)
[11]

MARKER'S USE ONLY:	Total mark Q5	
--------------------	------------------	--

QUESTION 6 **SOCIAL IMPLICATIONS**

American healthcare company Henry Schein has reported a second cyberattack this month by the BlackCat/ALPHV ransomware gang, who also breached their network in October [2023]. The BlackCat ransomware gang added Henry Schein to its dark web leak site, saying it breached the company's network and allegedly stole 35 terabytes of sensitive data.

[<<https://www.bleepingcomputer.com/news/security/>>]

6.1 6.1.1 The article refers to ransomware. Briefly explain the term *ransomware*.

(3)

6.1.2 Define the terms *dark web* and *deep web* and give examples.

Dark web:

(1)

Example:

(1)

Deep web:

(1)

Example:

(1)

6.2 Companies try their best to protect information from hackers.

6.2.1 Give **TWO** ways a company can protect data from illegal access.

Precaution 1:

(1)

Precaution 2:

(1)

6.2.2 Various online platforms are available for making and sharing recordings.

Name **ONE** output device and **ONE** input device to produce a video recording.

Output device:

(1)

Input device:

(1)

6.3 Internet attacks target the infrastructure of the web. Identify **TWO** types of Internet attacks and explain them.

Type 1:

(1)

Explanation:

(1)

Type 2:

_____ (1)

Explanation:

(1)
[15]

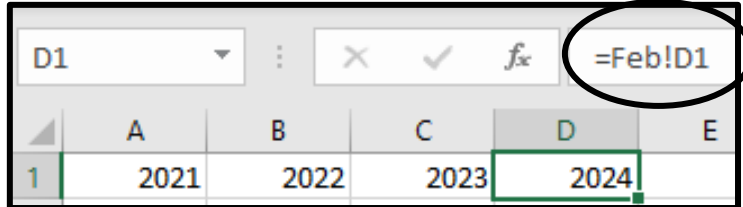
MARKER'S USE ONLY:	Total mark Q6	
--------------------	------------------	--

MARKERS'
USE ONLY

QUESTION 7 SOLUTION DEVELOPMENT

7.1 Michael uses a spreadsheet to monitor his insulin levels.

7.1.1 Below is an extract from the spreadsheet that Michael is using. What does the exclamation mark in the formula bar for cell D1 mean?



(1)

7.1.2 Below is an extract from Michael's insulin levels and gathered statistics.



(a) At what time did Michael's glucose levels peak?

(1)

(b) How many grams of carbs did he take in until 12 pm?

(1)

MARKERS' USE ONLY

7.2 Study the extract from the camp nurse's database below and answer the questions that follow:

MARKERS' USE ONLY

Field name	Description
Surname	Surname of the camper
FullName	Full name of the camper
Age	Age of camper
CamperID	Camper ID for easy access and record information
ParentCellNo	Parent cell number
Allergies	Allergies of camper
MedicalHistory	Description of medicine and medical history

7.2.1 Which field indicates that a boolean datatype was used?

_____ (1)

7.2.2 If the nurse changes the field size of the **Age** field to 2 (two), do you think this is correct? Explain why you agree or disagree with the change.

 _____ (1)

7.2.3 Identify the data type that should be used for the **MedicalHistory** field.

_____ (1)

7.2.4 Identify the database object that would enable the nurse to only gather the names and medical history of all the campers.

_____ (1)

7.2.5 The nurse wants to add another heading in the header of a report. Which control should she use?

_____ (1)

7.3 Examine the following screenshot of data in a spreadsheet.

	A	B	C	D	E	F	G
1	Date	Meal	Time	Food Item	Blood Sugar (mg/dL)	Carbs (g)	Bolus (units)
2	45306.00	Breakfast	8:00 am	Oatmeal	120	45	4
3	45306.00	Lunch	12:30 pm	Grilled Chicken	150	30	3
4	45306.00	Snack	3:00 pm	Apple	130	15	1.5
5	45306.00	Supper	6:30 pm	Quinoa Salad	140	50	5
6							
7	2024/01/16	Breakfast	8:00 am	Greek Yogurt	110	20	2
8	2024/01/16	Lunch	12:30 pm	Turkey Sandwich	160	40	4
9	2024/01/16	Snack	3:00 pm	Almonds	125	10	1
10	2024/01/16	Supper	6:30 pm	Salmon	135	35	3.5

MARKERS' USE ONLY

Michael keeps track of his food intake and uses this spreadsheet template.

7.3.1 The values within the cell range A2:A5 are displayed inaccurately. What actions are necessary to ensure the data is displayed correctly?

(1)

7.3.2 Name the formatting feature Michael used in the cell range E2:E10.

(1)

7.3.3 Provide the function Michael should use to determine the total quantity of carbohydrates he consumed on 16 January 2024.

(2)
[12]

MARKER'S USE ONLY:	Total mark Q7	
--------------------	------------------	--

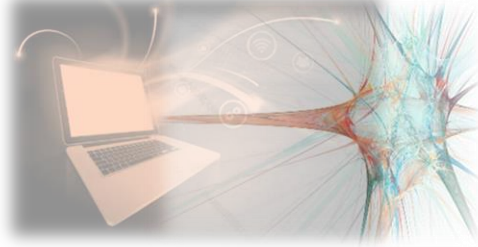
75 marks

SECTION C

QUESTION 8 INTEGRATED SCENARIO

MARKERS' USE ONLY

NERVE LAN RENTALS



[<<https://www.freepik.com/premium-vector/abstract-digital-icons>>]
 [<<https://www.sciencephoto.com/media/307884/view/nerve-cell-abstract-artwork>>]

The Esport Club at your school has opted to organise a gaming event for neighbouring schools. Thirty (30) students have already enrolled for the event. The club aims to ensure fairness by renting identical computers equipped with appropriate hardware for all participants. The setup will be arranged in the school's conference hall, which is equipped with network ports, Wi-Fi, power outlets, and a projector. You have been asked to reach out to Nerve LAN Rentals to request quotations for computer rentals.

8.1 Nerve LAN Rentals proposed the following two computers.

COMPUTER A	COMPUTER B
<div data-bbox="338 1211 762 1570" data-label="Image"> </div> <p data-bbox="261 1621 799 2047"> AMD Ryzen 5 5600H up to 4.2Ghz processor. CPU Support 16MB Cache. 15.6 FHD 144Hz Anti-glare IPS-Level display. Resolution 1920X1080 Windows 11 Home OS. 12GB DDR4 Memory 256GB Ultra-Fast NVME SwSD No optical drive included AMD Radeon™ RX 6500 M 2GB GGDR6 Graphics Dedicated Card Audio & microphone ports HDMI port & USB Type A port </p> <p data-bbox="491 2056 612 2094" style="text-align: center;">R1 100</p>	<div data-bbox="935 1218 1359 1559" data-label="Image"> </div> <p data-bbox="863 1615 1401 2040"> AMD Ryzen 5 5600H up to 4.2Ghz processor. CPU Support 16MB Cache. 15.6 FHD 144Hz Anti-glare IPS-Level display. Resolution 1920X1080 Windows 11 Home OS. 32GB DDR4 Memory 1TB Ultra-Fast NVME SSD Optical drive included AMD Radeon™ RX 6500 M 4GB GGDR6 Graphics Dedicated Card Audio & microphone ports HDMI port & USB Type C port </p> <p data-bbox="1086 2047 1208 2085" style="text-align: center;">R1 500</p>

[<<https://www.evetech.co.za/compare/29865,29880>>]



8.1.1 (a) Name the type of memory installed in Computer A.

_____ (1)

(b) How much storage does Computer B have?

_____ (1)

8.1.2 Computer A has a different USB port than Computer B. Identify which port belongs to Computer A and which one belongs to Computer B.

Image 1	Image 2
	
Answer:	Answer:

[<<https://iboysoft.com/wiki/usb-port.html>>] (2)

8.1.3 Both computers' CPUs support *cache*.

(a) Define the term *cache*.

 _____ (1)

(b) Does cache make the CPU faster? Explain your answer.

 _____ (2)

8.1.4 Name the storage device, mentioned in both computers, that is not included in many new computers.

_____ (1)

8.2 Participants had questions about bringing their own hardware. No individual speakers are allowed at the event to prevent sound overload.

8.2.1 Give **TWO** hardware gamers use to enhance their gaming experience, excluding hardware that provides sound.

(2)

8.2.2 Some hardware connect via wires.

(a) What hardware can be used if there are not enough USB ports available on a computer to connect wired devices?

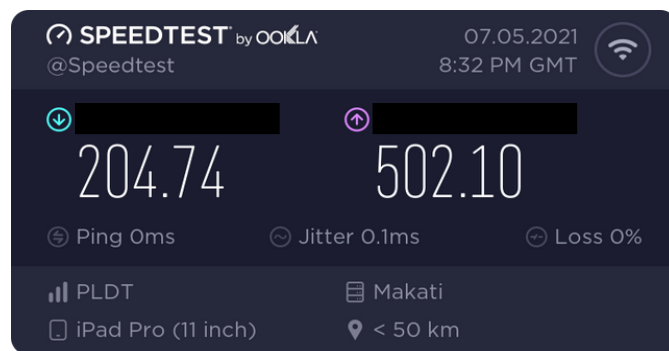
(1)

(b) A gamer might prefer a wired gaming mouse over a wireless mouse. Give a reason why this would be the better choice.

(1)

8.3 The school makes use of fibre Internet connection. You conducted a speed test using a free service to assess the connection's speed.

Refer to **Figure 6** below that indicates the speed test results and answer the following questions.



[<<https://www.reddit.com/r/InternetPH/comments/n78g1v>>]

Figure 6

8.3.1 There are two values, 204.74Mbps and 502.10Mbps in the image. Discuss the meaning of each value.

(2)

8.3.2 Define the term *ping*.

(2)

8.3.3 Describe the term *broadband*.

(2)

8.4 One of the club members created a temporary website. Study the HTML code below.

```

<html> <head> LAN Event
      <title> <title/>
      </head>
<body bgcolor = "#FFFFFF">
  <h1>WE ARE LIVE!! </h1> <br/>
  <h2> Schools participating are:</h2>
  Maple Hills High School.
  Clear Lake Secondary School.
  Coral Springs High School.
  Oakland Secondary School.
  Willow Technical High School.
  <br/>
</body>
</html>
    
```

8.4.1 The text 'LAN Event' needs to display on a web browser tab. Give **TWO** solutions to fix the problem.

Solution 1: _____

Solution 2: _____

(2)

8.4.2 Describe which HTML tags you should use to display the participating schools in a bulleted list.

(2)
[22]

MARKER'S USE ONLY:	Total mark Q8	
--------------------	------------------	--

MARKERS'
USE ONLY

QUESTION 9 INTEGRATED SCENARIO (continued)

9.1 The school's ICT department is assisting the Esport Club with the administration and preparation for organising the LAN event.

You want to type notes and create posters and signs for the participants.

9.1.1 While typing the rules, you copy text from other documents. Clarify the distinction between the *paste function* and the *format painter*.

Paste:

Format Painter:

(2)

9.1.2 When typing the rules for the event on a device, predictive text makes it difficult. Explain the meaning of *predictive text*.

(2)

9.1.3 Name **ONE** benefit of using predictive text.

(1)

9.1.4 After proofreading your document you discovered that you typed 'they're' instead of 'their'. Name a feature to ensure all the instances with incorrect words throughout the document are changed to the correct spelling.

(1)

9.2 The CAT teacher suggested using her drone at the LAN event. It has LED lights and a webcam built into it.

9.2.1 A software component provides communication between an operating system and a drone. What is this software's general name?

_____ (1)

9.2.2 What is a *drone*?

_____ (1)

9.2.3 What is the purpose of the drone's webcam during the LAN event?

 _____ (1)

9.3 The network administrator's duties include verifying that the games are installed and ensuring the functionality of all rented notebooks.

The server desktop computer fails to switch on. Name **TWO** possible issues he can check to solve the problem.

Possibility 1:

Possibility 2:

 _____ (2)

9.4 The network administrator was satisfied that the rented notebooks met the *minimum requirements* and *recommended requirements*. Define the two concepts.

Minimum requirements:

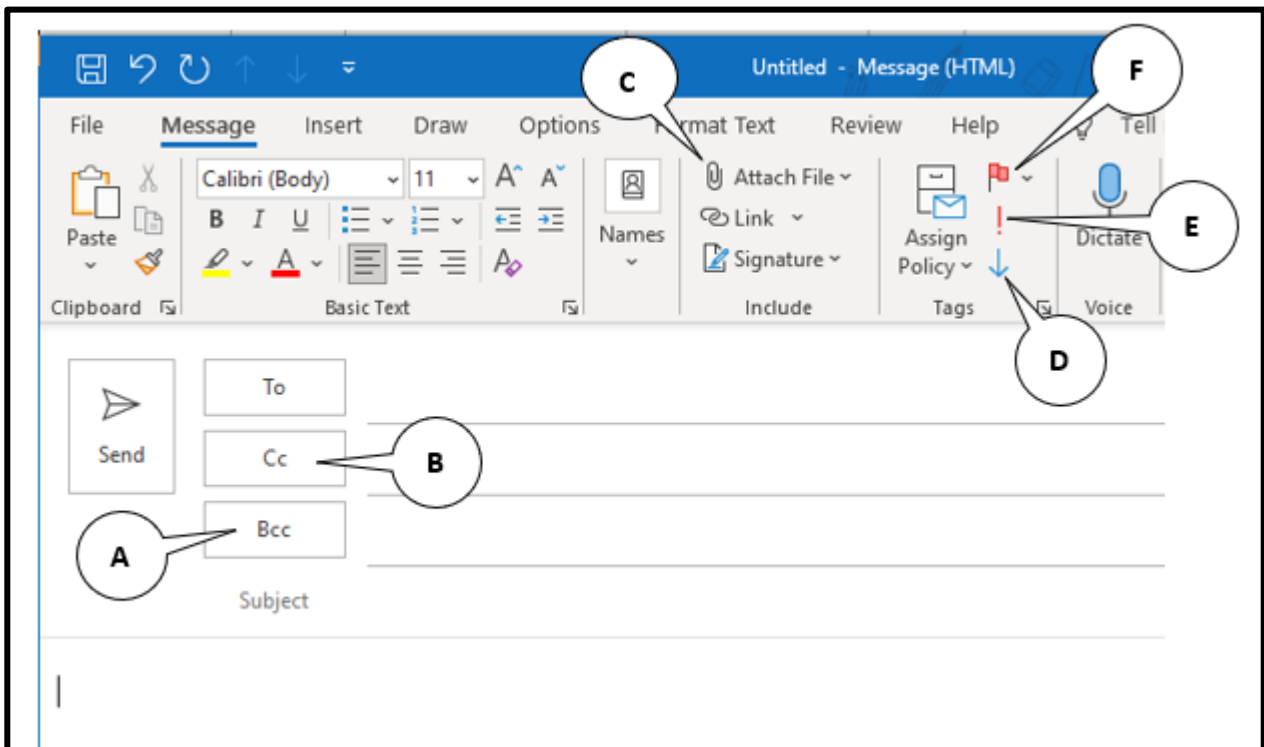
 _____ (2)

Recommended requirements:

(2)

9.5 Correspondence regarding the LAN event mainly takes place via emails. Refer to the screenshot of an email and answer the questions that follow.

9.5.1 Choose the correct label (A, B, C, D, E or F) for the following actions.



(a) Which label allows you to set the email as low priority?

Label: _____ (1)

(b) Which label allows you to add a recipient without showing their email address to other recipients?

Label: _____ (1)

(c) Which label will remind you to get back to the email at a later stage?

Label: _____ (1)

9.6 The CAT teacher helped the students to create a spreadsheet with some relevant information about the participants for the LAN event.

Refer to the extract below and answer the following questions.

	A	B	C	D	E	F	G	H
1	ID	Name	Surname	Age	CellNumber	EmailAddress	School	Paid
2	1	Martha	Gonsalves	13	0835457789	mg2244@icloud.com	Coral Springs High School	
3	2	Thabo	Mbiya	13	0825412695	mbibi@gmail.com	Maple Hills High School	Yes
4			13 Count	2				
5	3	Jack	Redding	14	0825498765	rackreds@yahoo.com	Clear Lake Secondary School	Yes
6	4	Freddy	Smith	14	0612479965	fredtheone@gmail.com	Willow Technical High School	
7			14 Count	2				
8	5	Sue	Mhlangu	15	0825432543	sue123@gmail.com	Maple Hills High School	Yes
9	6	Anthea	Kokla	15	0846655889	anbells@mweb.co.za	Willow Technical High School	
10	7	Quintas	Du Plessis	15	0712445796	highfive@telkomsa.net	Maple Hills High School	Yes
11			15 Count	3				
12	8	Kenneth	Sambo	16	0725412211	kennys@yahoo.com	Coral Springs High School	Yes
13	9	Jennifer	Gallor	16	0789632655	jennigall@gmail.com	Oakland Secondary School	
14	10	Cindy	Coetzee	16	0839874563	ccoetzee@gmail.com	Coral Springs High School	
15			16 Count	3				
16			Grand Count	10				

9.6.1 Name the spreadsheet feature used to create the summary displayed in rows 4, 7, 11 and 15.

_____ (1)

9.6.2 Describe the method by which the data within the cell range **C2:C14** was grouped according to Age, to achieve the given result.

 _____ (2)

9.6.3 **Column F** contains the email addresses of the students. The teacher suggests adding a hyperlink to the email address. What is the purpose of a hyperlink?

 _____ (2)

9.6.4 What is the function of the triangle in the top left corner of the spreadsheet, between **column A** and row 1 headings?

_____ (1)

9.7 The grade 11s are fundraising at the LAN event and will be selling food and drinks. They have a card machine to make the event cash-free.

9.7.1 Which technology enables payment via tapping a smartwatch or card on the card machine?

_____ (1)

9.7.2 Name another intelligent function of a smartwatch, apart from using it for payments and health monitoring.

_____ (1)

9.8 The school is taking responsibility for all the rental notebooks and securing the data.

9.8.1 Give an example of how the school can secure the laptops in the hall, excluding hiring security guards and locking the hall doors.

 _____ (1)

9.8.2 Give the keyboard shortcut to lock the screen on a computer.

_____ (1)
[28]

MARKER'S USE ONLY:	Total mark Q9	
--------------------	------------------	--

50 marks

Total: 150 marks

